

## Heating Circulators

### CORIO C Immersion Circulator

for working temperatures from +20 °C to +100 °C

The CORIO C is the entry level model of the CORIO circulator portfolio. The bath attachment clamp is included in delivery and facilitates mounting of the circulator on any bath tank up to 30 liters.

- Precise temperature control
- For internal standard applications
- For bath tanks with a max. filling volume of 30 liters
- Immersion depth: 7.5 ... 16.5 cm
- Bright, white, easy-to-read display
- Whisper quiet
- Easy operation
- Class I (NFL) according to DIN 12876-1

To adapt the CORIO Immersion Circulator to your individual application we offer a comprehensive range of accessories (racks, bath lids, and more).



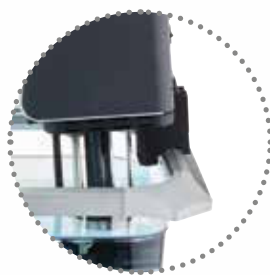
#### Option I

The universal bath attachment clamp permits mounting the CORIO Immersion Circulator on rectangular as well as round bath tanks.



#### Option II

Just a few simple steps and the bath attachment clamp is transformed into a mount for laboratory stands.



#### Option III

The Immersion Circulator can be attached directly to the rim of an open JULABO bath.



#### Flexibility.

The jet nozzle permits continuous adjustment of the pump stream in your bath.



### CORIO™ C

**Order No.** 9 011 000

Working temperature range °C <sup>1)</sup> +20 ... +100

Temperature stability °C ± 0.03

Heating capacity kW 2

Circulation capacity l/min bar

Flow rate / Pressure 6 0.1

Dimensions cm W × L × H  
13.2 × 16 × 36.2

#### Applications (CORIO C, CD and CP)

Flexible applications when changing bath tanks. For a large variety of applications in chemistry, pharmaceuticals, medicine, e.g. temperature applications, analytics, or material testing.

## CORIO CD and CP Immersion Circulator

for working temperatures from +20 °C to +200 °C

In addition to the advantages of the CORIO C Circulator, the CORIO CD and CP Immersion Circulator can be equipped with an optional pump set for temperature control of external applications.

- Precise temperature control
- For internal and external applications (accessories required)
- For bath tanks with a max. filling volume of 50 liters
- Immersion depth: 7.5 ... 16.5 cm
- Bright, white, easy-to-read display
- Very quiet
- Easy handling
- Easy change-over from internal to external circulation and vice versa
- pump capacity, infinitely adjustable (CP)
- USB interface
- R232 interface (CP)
- Early warning system for low liquid level (CP)
- Class III (FL) according to DIN 12876-1

To adapt the CORIO Immersion Circulator to your individual application we offer a comprehensive range of accessories (racks, bath lids, tubing, adapters, and more).



### CORIO™ CD

**Order No.** 9 012 000

Working temperature range °C <sup>1)</sup> +20 ... +150

Temperature stability °C ± 0.03

Heating capacity kW 2

Pump capacity  
Flow rate / Pressure 15 0.35

Dimensions cm  
W × L × H  
13.2 × 16 × 36.2

### CORIO™ CP



**Order No.** 9 013 000

Working temperature range °C <sup>1)</sup> +20 ... +200

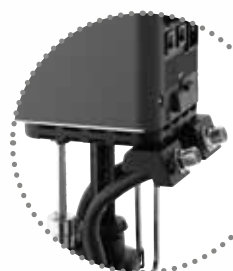
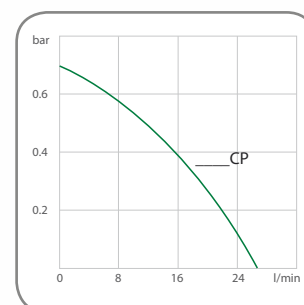
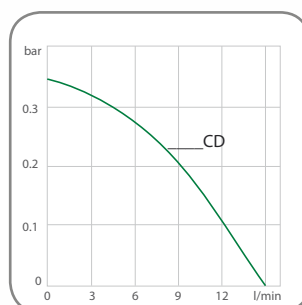
Temperature stability °C ± 0.02

Heating capacity kW 2

Pump capacity  
Flow rate / Pressure 8 ... 27 0.1 ... 0.7

Dimensions cm  
W × L × H  
13.2 × 16 × 36.2

### Pump capacity Bath fluid: Water



### Optional pump set

With a few simple steps you can install a pump set on the CORIO CD Immersion Circulator. In no time at all, your circulator is ready for temperature control of an external application.



### Universal.

Universal bath attachment clamp. For straight containers. For round containers. For laboratory stands (in combination with stand attachment).

<sup>1)</sup> For applications near or below ambient temperature: use a cooling coil or JULABO immersion cooler.